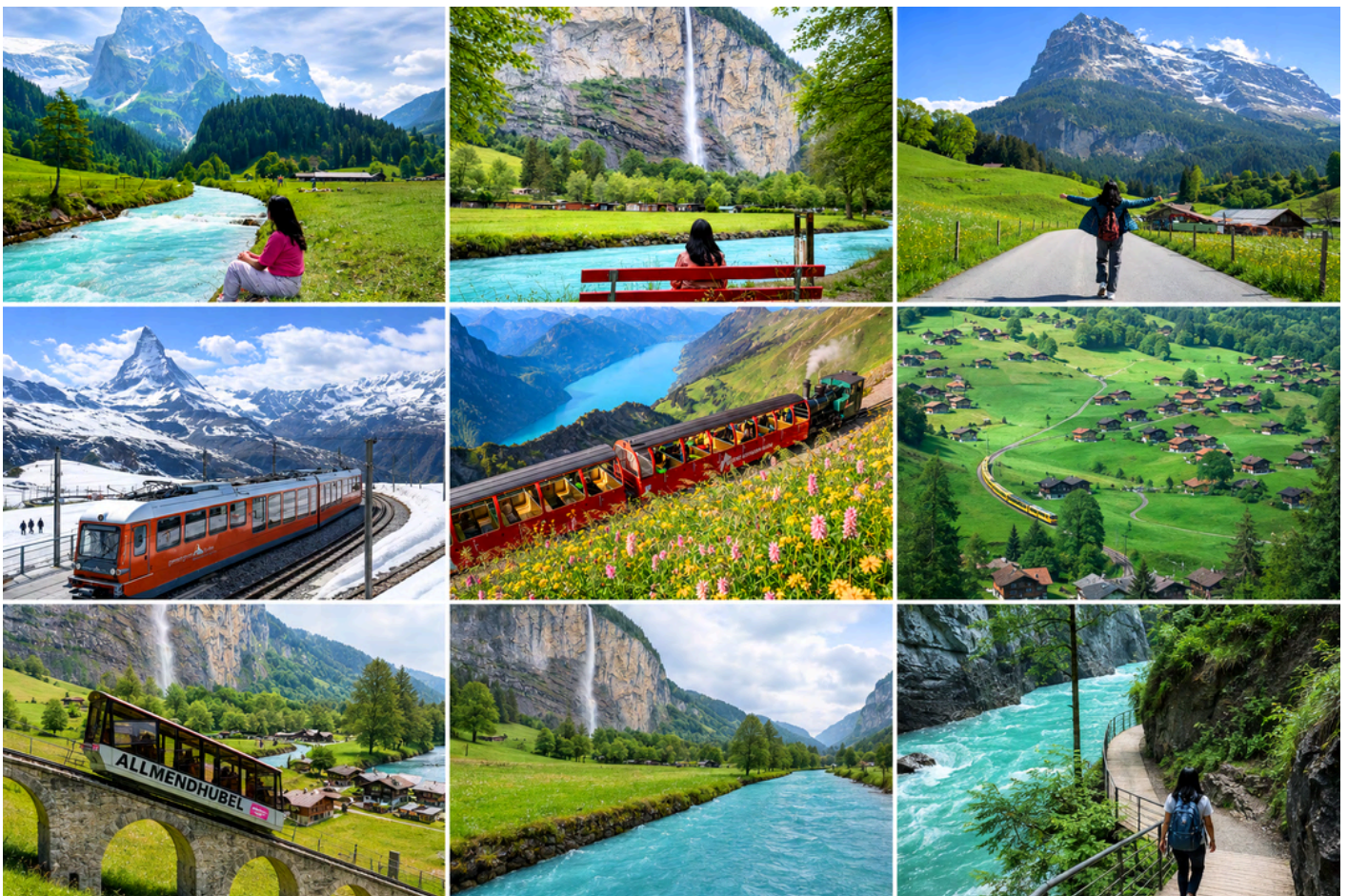


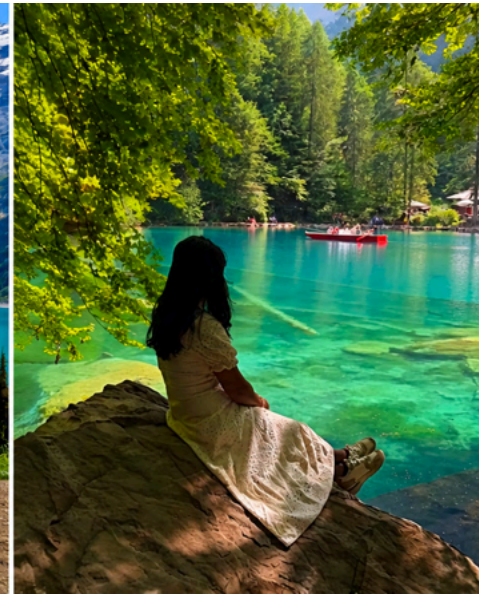
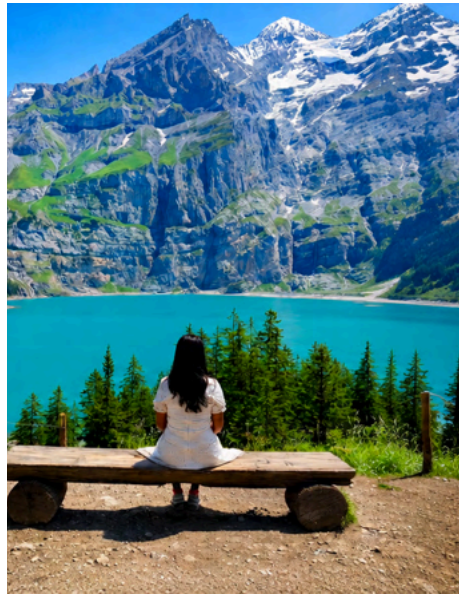
# Switzerland Itinerary

## For Explorers & Adventure Enthusiasts – A Scenic, Thrilling Swiss Escape

This itinerary is crafted for travelers who want more than just sightseeing. It combines Switzerland's legendary mountain views with unique alpine adventures – from the cliff-hugging Gelmerbahn and hidden Stauben Waterfall to the crystal-clear waters of Oeschinensee and Blausee.

While still covering the essential highlights like Jungfrauoch and Grindelwald, this journey adds a layer of excitement, scenic depth, and unforgettable lake experiences that elevate your Swiss holiday to the next level.





### Highlights:

**Day 1:** Arrive at Zurich Flughafen, transfer to Lucerne, enjoy a Lake Luzern cruise and Rigi Kulm train.

**Day 2:** Day trip to Mt. Titlis (Titlis Rotair, Ice Flyer, Glacier Park) with optional Mt. Pilatus visit.

**Day 3:** Visit Stauben Waterfall in Unterschächen, then transfer to Interlaken.

**Day 4:** Ride Brienz Rothorn Steam Train, explore Aare Gorge, and view from Harder Kulm.

**Day 5:** Visit Jungfrauoch (Sphinx Observatory, Ice Palace, Aletsch Glacier) and explore Trümmelbach Falls and Lauterbrunnen.

**Day 6:** Experience Grindelwald First adventure activities or visit Mürren, Allmendhubel, and Gimmelwald.

**Day 7:** Ride Gelmerbahn Funicular, explore Rosenloui Valley, and cruise Lake Brienz to Iseltwald.

**Day 8:** Visit Oeschinensee and Blausee, with an optional sunset cruise on Lake Thun.

**Day 9:** Travel to Zurich, visit Lindt Home of Chocolate, and see Rhine Waterfall.

**Day 10:** Explore Zurich Old Town before evening departure.

***This itinerary is a mix of “famous places” and “offbeat spots”. If you want to visit only the popular and iconic places and have less number of days, you can download the free itinerary from this [Link](#) or [\(this link\)](#).***

### Some Useful Tips:

**Best time to visit**



## Sim Card to buy

- **eSIM:** For cost-effective mobile connectivity, the **JetPac SIM** is the most budget-friendly choice available. I have used this SIM on my last four trips to Switzerland, and it has delivered outstanding performance. The JetPac eSIM is priced at just \$16–17 (after a 10% sign-up discount) for 15 GB of data.

[Google Play](#)

[Apple Store](#)

**Physical SIM:** If your phone is not compatible with eSIM, think about ordering a physical SIM from TSIM, which can be delivered to your home within two days (Head office: Mumbai). For more details, visit: TSIM. Both JetPac and TSIM provide rates that are considerably lower than those of Matrix SIM and are four times more affordable than Airtel's international roaming plans.

[physical SIM from TSIM](#)

## Cash Credit Card

- Switzerland is predominantly a cashless society; you will not require any cash during your visit. After four trips to Switzerland, I can assure you of this.
- The best credit card for international travel with zero foreign exchange fees is the [Scapia Credit Card](#). I have used this card in 48 countries, and it has never let me down. Additionally, it is a lifetime free credit card.
- In the event you need to withdraw cash—though I don't see that as necessary—the Zero Forex Debit Card is the [Niyo Global DCB Debit Card](#) - it should be DCB -Not SBM. It offers zero forex charges, is lifetime free, and requires no balance maintenance. You can load cash via UPI and withdraw funds at international ATMs. Any remaining cash can be transferred back to your personal savings account through UPI after your trip.

## App to Download

- To enhance your travel experience, download the free **SBB Mobile app**. Simply input your current location along with your desired destination, and the app will display all available connections, including trains, ferries, cable cars, gondolas, and walking routes.

[Google play](#)

[Apple Store](#)

# Which Pass should I buy?

There are many passes available. Which pass to select- completely depend upon your Switzerland itinerary. Famous Passes are:

## 1. **Swiss Travel Pass:** The Swiss Travel Pass covers:

All buses, trams, and local public transport throughout Switzerland

All trains within Switzerland, starting from the France–Switzerland border (Basel)

Travel up to the Switzerland–Italy border stations, including:

- Chiasso – for routes between Switzerland and Milan via Lugano
- Domodossola – for routes such as Zermatt / Interlaken / Brig → Milan

**Special scenic trains are not fully covered** under the Swiss Travel Pass.

- **Bernina Express** and **Glacier Express**
  - The **train journey is covered** by the Swiss Travel Pass
  - A **mandatory seat reservation** is required (approximately **CHF 30–40 per person**)
- **Brien Rothorn Bahn (steam cogwheel train)**
  - Not fully included
  - Swiss Travel Pass holders receive **50% discount** on the ticket fare

Some gondolas, such as the Grindelwald First Cable Car and Mount Titlis, are only partially covered, offering a **50% discount**.

## **Children Travel Policy with Swiss Travel Pass**

- **Children under 16 years travel FREE** with the **Swiss Family Card** when accompanied by at least one parent holding a Swiss Travel Pass.

## How it works:

- While purchasing the Swiss Travel Pass, simply **add children and specify their ages**.
- Only **adults (16+ years)** are charged.
- Children will receive a **complimentary (free) Swiss Family Card via email**

## 2. Swiss Half Fare Card:

The discounts on the Gondola, special trains, seat reservations, and more are identical to those offered by the Swiss Travel Pass. The primary distinction is that for every train or bus or Ferry you take, you must purchase a ticket each time through the SBB app and pay half fare. While this may seem advantageous for certain itineraries, consider how tedious it can be to buy a ticket for every connection—be it bus, ferry, or train. This is why I find it unappealing, even if it saves a few dollars.

## 3. Eurail Pass:

The **Eurail Pass** is ideal if you are travelling to **multiple European countries along with Switzerland**.

- Covers **almost all trains within Switzerland**, including:
  - Intercity trains
  - Regional trains
  - Cross-border trains
  - **All major trains** within Switzerland are **100% covered**
  - **Lake cruises** such as **Lake Brienz** and **Lake Thun** are also included
  - **Mountain excursions & gondolas**
    - Typically offer **around 25% discount**
    - Some mountain railways or gondolas may offer **no discount** with Eurail
- The same pass can be used for train travel in **other European countries** such as **France, Italy, Germany**, and many more participating countries (35 European Countries).

The **Swiss Travel Pass** generally provides **minimum 50% discount** on most mountain railways and cable cars.

Eurail Pass discounts on mountains are **more limited** ie. 0% to 25% compared to the Swiss Travel Pass(Example: Jungfrau, Titlis, Schilthorn, etc is 25% off and Matterhorn Glacier Paradise, Brienz Rothorn Bahn, etc has no discount)

So if you are travelling multiple countries in Europe and are not doing so many gondolas in Switzerland - then Eurail Pass will work the best.

*Note: While there are additional passes available, such as the Jungfrau Travel Pass and the Berner Oberland Pass, we won't delve into those here. Their complexity makes them difficult to explain, and they don't offer significant savings, which can lead to unnecessary headaches.*

**In most cases, the Swiss Travel Pass is the most convenient option, especially for this itinerary: the Swiss Travel Pass is highly effective.**

## Where can I purchase the Swiss Travel Pass at best price?


### How to Get a 5% Discount on the Swiss Travel Pass?

- You can secure a flat 5% discount on Swiss Travel Pass bookings through my link, with no upper limit on the total discount.
- **Potential Savings:**
  - 6-Day Swiss Travel Pass: Save over ₹2,000 (22 Euro)
  - 8-Day Swiss Travel Pass: Save over ₹3,600(33 Euro)

#### **Steps to Access the Discount:**

- a. Download the GetYourGuide app using this link: [GetYourGuide App](#).
- b. Open the app and search for "Swiss Travel Pass," or access it directly through this link: [Swiss Travel Pass](#)
- c. At checkout, enter the following coupon code in the Gift/Promo Code box:  
**WANDERFULPASSPORT5**

The discount will be applied automatically. Enjoy your travels!



**Swiss Travel Pass: Swiss All-in-One Pass on Train, Bus, Boat**

★★★★★ 4.8 (872) Top rated

📅 6-Day Swiss Travel Pass for Travel in Second Class

🕒 Fri, Aug 15, 2025 • Opening hours: 00:00 - 23:59

👤 1 Adult


✅ Free cancellation  
Until 12:00 am on Aug 14

₹41,142  
**₹39,084**

**Gift or promo code**  
WANDERFULPASSPORT5  
5% off Remove

Subtotal ₹41,142  
Gift or promo code - ₹2,057  
**Total ₹39,085**

**Order summary**  
1 activity ^



**Swiss Travel Pass: Swiss All-in-One Pass on Train, Bus, Boat**

★★★★★ 4.8 (872) Top rated

📅 8-Day Swiss Travel Pass for Travel in First Class

🕒 Sun, Aug 10, 2025 • Opening hours: 00:00 - 23:59

👤 1 Adult

🚫 This activity is non-refundable

₹72,188  
**₹68,578**


**Gift or promo code**  
WANDERFULPASSPORT5  
5% off Remove

Subtotal ₹72,188  
Gift or promo code - ₹3,609  
**Total ₹68,579**

## Is GetYourGuide offering the best rate for the Swiss Travel Pass?

1 CHF=121 INR=1.28USD=1.09 Euro

**Order summary**  
1 activity



**Swiss Travel Pass: Unlimited  
Travel on Train, Bus & Boat**  
★★★★★ 4.8 (1,635)  
Top rated

📅 6 Days Continuous Swiss Travel Pass Second Class  
🕒 Tue, Mar 03, 2026 • Opening hours: 00:00 - 23:59  
👤 1 adult  
✅ Free cancellation  
Until 12:00 AM on Mar 2

CHF 399.00  
**CHF 379.05**

📦 **WANDERFULPASSPORT5** gift code applied >

Subtotal	CHF 399.00
Gift code	- CHF 19.95
<b>Total</b>	<b>CHF 379.05</b>

All taxes and fees included

swiss-pass.ch/s...

Class  2<sup>nd</sup>  1<sup>st</sup>

Validity

<input type="radio"/> 3 Days	<input type="radio"/> 4 Days
<input checked="" type="radio"/> 6 Days	<input type="radio"/> 8 Days
<input type="radio"/> 15 Days	

Who is travelling?

Adult (25 yrs and above)

-	1	+
---	---	---

Youth (16 - 24.99 yrs)

-	0	+
---	---	---

Child (6 - 15.99 yrs)

-	0	+
---	---	---

Ticket	Price
1 adult	CHF 399.00

Let's consider the 6-Day Continuous Swiss Travel Pass as an example. I checked the official Swiss Travel Pass website, where the rate is 399 CHF. By using my coupon code **WANDERFULPASSPORT5**, you can save 20 CHF (22 Euros) per person, bringing the price down to 379 CHF after applying the promo code.

**Please Note:** With my promo code, the discount is limitless! Even if you have a family of four adults, you will still receive a full 5% off. Example below, **79 CHF OFF**, which is approximately **87 EURO**.

**Order summary** ^  
1 activity



**Swiss Travel Pass: Unlimited  
Travel on Train, Bus & Boat**  
★★★★★ 4.8 (1,635)  
❤️ Top rated

📅 6 Days Continuous Swiss Travel Pass Second Class  
🕒 Tue, Mar 03, 2026 • Opening hours: 00:00 - 23:59  
👤 4 adults

✅ Free cancellation  
Until 12:00 AM on Mar 2

CHF 1,596.00  
**CHF 1,516.20**

📁 WANDERFULPASSPORT5 gift code applied >

Subtotal	CHF 1,596.00
Gift code	- CHF 79.80
<b>Total</b>	<b>CHF 1,516.20</b>

All taxes and fees included


## Does Same Discount Code work for Swiss Half Fare Card and Jungfrau Travel Pass as well?

WANDERFULPASSPORT5 works also for:

[Swiss Half Fare Card](#) and

[Jungfrau Travel Pass](#)

**Order summary** ^  
1 activity




**Swiss Travel Pass: Swiss All-in-One Pass on Train, Bus, Boat**  
★★★★★ 4.8 (1,008)  
❤️ Top rated

📅 6-Day Swiss Travel Pass for Travel in Second Class  
🕒 Thu, May 14, 2026 • Opening hours: 00:00 - 23:59  
👥 3 adults, 2 children

✅ Free cancellation  
Until 12:00 AM on May 13

CHF 1,197.00  
**CHF 1,137.15**

**Order summary** ^  
1 activity



**Jungfrau: Travel Pass for 3 to 8 Days**  
★★★★★ 4.7 (258)

📅 Jungfrau Travel Pass: Unlimited Transportation Ticket 5 Days  
🕒 Thu, Jun 11, 2026 • Opening hours: 00:00 - 23:59  
👥 2 adults, 1 child

✅ Free cancellation  
Until 12:00 AM on Jun 10

[Edit](#)

CHF 570.00  
**CHF 541.50**

📅 WANDERFULPASSPORT5 gift code applied >

Subtotal CHF 1,197.00  
Gift code - CHF 59.85  
**Total CHF 1,137.15**  
All taxes and fees included

📅 WANDERFULPASSPORT5 gift code applied >

Subtotal CHF 570.00  
Gift code - CHF 28.50  
**Total CHF 541.50**  
All taxes and fees included

# Airbnb Link of all my stay in Switzerland





Region	Town	Airbn b	Description
<b>Interlaken</b>	Lauterbrunnen	<a href="#">Link</a>	Modern 1-bed apartment in Lauterbrunnen; ~10-min walk to village center.
<b>Interlaken</b>	Lauterbrunnen	<a href="#">Link</a>	Studio in Chalet Bergliebe; unobstructed waterfall & Swiss Alps view; ~15-min walk to station or 1-stop bus.
<b>Interlaken</b>	Beatenberg / Interlaken	<a href="#">Link</a>	“Sungalow” vintage-chic chalet near Beatenberg; ~10 m from bus stop with direct connectivity to Interlaken.
<b>Interlaken</b>	Meiringen	<a href="#">Link</a>	Nice place w/ free parking near Meiringen; public transport 1 min away; ~15-min walk to village centre; great base for Aare Gorge/Rosenloui/Gelmerbahn.
<b>Interlaken</b>	Near Spiez (Reichenbach im Kandertal)	<a href="#">Link</a>	Hidden Retreats “The Lohner”; luxury 3-bedroom ideal for groups; close to Spiez and well connected to Interlaken.  Located 3 mins walk from Reichenbach im Kandertal Station( Spiez is 9 mins by train)
<b>Interlaken</b>	Near Spiez (Reichenbach im Kandertal)	<a href="#">Link</a>	<b>110 Euro Per Night for 2 in the peak season. This is located 8 mins walk uphill from Reichenbach im Kandertal train station(spiez is 9 mins train). I have stayed here in my last trip and loved my stay here-away from Interlaken Crowd</b>
<b>Interlaken</b>	Wengen	<a href="#">Link</a>	Light, bright studio for 2 in central Wengen; ~5-min walk to Wengen station; scenic “postcard” village with Jungfrau range views.
<b>Luzern</b>	Lucerne	<a href="#">Link</a>	At the gates of Lucerne; train ~2-min walk; grocery next door; fully equipped kitchen;

			washer/dryer; very clean; welcome
<b>Luzern</b>	Lucerne (Rotsee)	<a href="#">Link</a>	Twin bed room in loft above Rotsee Lake; bus stop right outside; ~10 min by bus to Lucerne centre; scenic, quiet, budget-friendly.
<b>Zurich</b>	Zürich Old Town	<a href="#">Link</a>	Charming room in Old Town; ~15-min walk to main station; ~8 min to Coop; surrounded by cafés/restaurants; peaceful; 3rd floor, no elevator.
<b>Zurich</b>	Zürich (Tram Access Area)	<a href="#">Link</a>	Room in Zürich; not in exact centre; a few minutes' walk to tram; ~15–20 min to centre by frequent tram.
<b>Zermatt</b>	Zermatt (Town Center)	<a href="#">Link</a>	Apartment Theodul Cozy downtown studio; ~4-min walk to station & town centre; budget-friendly & super central (often sold out).
<b>Zermatt</b>	Zermatt (Matterhorn View Area)	<a href="#">Link</a>	Studio with unobstructed Matterhorn view; ~1-min walk to Matterhorn gondola; shuttle stop in front; town/station ~17-min walk.

**P.S. If you are traveling to Italy, Paris, Amsterdam, or other European cities, be sure to [Check all of my Airbnb listings](#)**

## Day 1: Zurich Flughafen Airport to Lucerne Main Station

**Overnight: Luzern**

**Operation time:**

Mount Rigi & Luzern Cruise: Available Year-Round

- **Arrival at Zurich Airport:** Follow signs for "Bahn / Train" located one level underground.
- **Travel to Lucerne:** Directly travel to Lucerne (approx. 70 minutes) to conserve energy for the trip's highlights.

- **Check-In:** Choose accommodations within a 5-10 minute walk or bus ride from Luzern Central Station.
- **Evening Leisure:** Enjoy a relaxing evening by Lake Lucerne.



## What should I do if I arrive in Lucerne early? How can I make the most of my day?

If you arrive early in **Lucerne**, you can make great use of the **Swiss Travel Pass** with this easy plan:

- Start at [Luzern Bahnhofqua](#) (ferry pier opposite the train station).
- Take the **free ferry across Lake Lucerne to Vitznau** (no reservation needed).
- From **Vitznau**, take the **#82 cogwheel train to Rigi Kulm** (also free with the pass) for amazing Alpine views.
- Spend some time at **Rigi Kulm**, then return to Lucerne.

**Time Constraint:** You can also skip Rigi Kulm, spend time in **Vitznau (Lake Side Village)** and come back to Luzern by bus + Train



## Day 2: Excursion to Mt. Titlis & Explore Luzern

### Overnight: Luzern

#### Operation Time:

- **Mt. Titlis:** Open year-round (short maintenance break some days).
- **Mt. Pilatus(optional):** Cogwheel train runs **May 11 – Nov 29** (visit only when it operates).  
[See current operating times](#)

### Morning: Mount Titlis

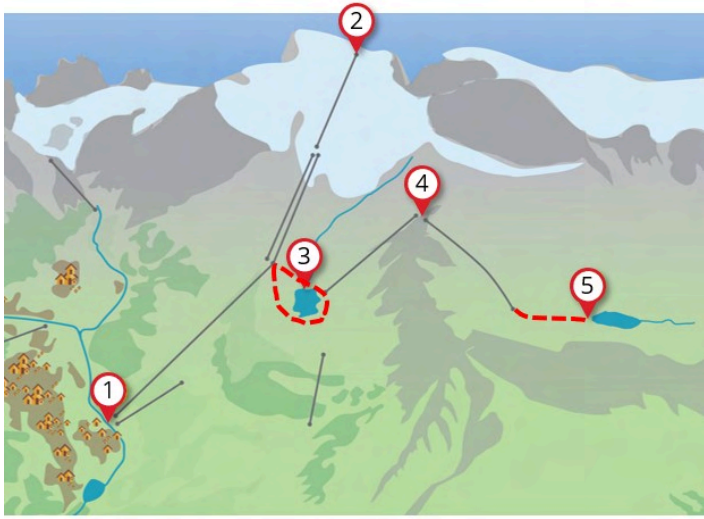
- Take a **train from Lucerne to Engelberg**.
- Cable car journey (3 stages):
  1. **Engelberg → Trübsee** (Titlis Xpress gondola)
  2. **Trübsee → Stand**
  3. **Stand → Titlis Summit** (Titlis Rotair rotating cable car)

#### At the Summit:

- Optional **Ice Flyer chairlift** over the glacier (with Ice Flyer Combo ticket).
- Spend ~2 hours exploring views, glacier park, and restaurants.

#### On the way down:

- Stop at **Trübsee Lake** for a short walk or picnic.
- Return to **Engelberg → train back to Lucerne**.



1. Engelberg Titlis cable car station, parking, bus stop
2. Titlis glacier, suspension bridge, ice tunnel
3. Trübsee lake, fun hike for kids, playground
4. Jochpass restaurant
5. Engstlensee

### Lunch Recommendation:

- [Wirtshaus Taube](#) – Savor traditional Swiss dishes such as Rösti and Fondue.

### Afternoon: Lucerne Town

After lunch, visit:

- [Chapel Bridge \(Kapellbrücke\)](#): Iconic wooden bridge with 17th-century paintings.
- [Medieval Old Town](#): Frescoed buildings, historic squares, lively cafés.
- [Musegg Wall & Towers](#): Walk the ancient walls and climb towers for views.
- [Lion Monument \(Löwendenkmal\)](#): Memorial to Swiss Guards of the French Revolution.
- [Church of St. Leodegar](#): Beautiful 17th-century church.

### Optional: Combine Mount Pilatus (Start 2:14 PM from Lucerne)

**Note:** It is possible to Combine Pilatus on this day(although **it will be hectic**). But the Latest possible start time should be 2:14 p.m. from Lucerne.

If you plan to do Pilatus around 2:14 PM from Lucerne, please adhere to this order strictly, as I have arranged it with the connection time in mind.

**Also note: The Main USP of Pilatus is the COGWHEEL train and it only operates daily from 11 May until 24 October. So, without it → It does not make sense at all to do Pilatus.**

### Route:

- **2:14 PM:** Bus 1 from Lucerne (Plattform A) → **Kriens, Zentrum Pilatus** (12 min).
- **2:26 PM:** Walk ~9 min to **Kriens Gondola Station** (arrive ~2:37 PM).
- **3:07 PM:** Take **3 connected gondolas** → **Pilatus Kulm (Top)**.
- **3:19 PM:** Reach summit.

### Return:

- **3:44 PM:** Pre-book **Cogwheel train descent** (mandatory).
- **4:27 PM:** Boat from Alpnachstad (waits for cogwheel passengers).
- **5:36 PM:** Arrive **Lucerne** by boat.  
*If cogwheel is missed → return by bus instead of boat.*



## Pilatus Ticket with Swiss Travel Pass

Boat & buses are **free**. Buy only: **Gondola + Cogwheel ticket + Cogwheel time-slot reservation.**

- Book here: <https://shop.e-guma.ch/pilatus-bahnen/en/tickets/c/tickets-from-kriens-6396462>
- Select the required option and **pay CHF 47** for the Pilatus round trip.
- Only the **cogwheel train is time-slot based and hence we need to reserve in advance (for this reason- its best to prebook Pilatus Ticket in advance)**; others can be used anytime that day.



**Kriens - Alpnachstad | Single trip**

### Reservation cogwheel train Pi

CHF 5.- per person

None	08:44	09:16
11:39 🚗 12:22	12:14	12:46
15:09	15:44 🚗 16:27	16:19

# Day 3: Stäuben(Unterschächen/Straubifall ) waterfall and transfer to Interlaken

## Overnight: Interlaken region

**Operation time:** Buses from **Altdorf UR** → **Unterschächen Ribi** run frequently from **mid-June onward**. Recheck the schedule.

## Morning – Staubifall Waterfall

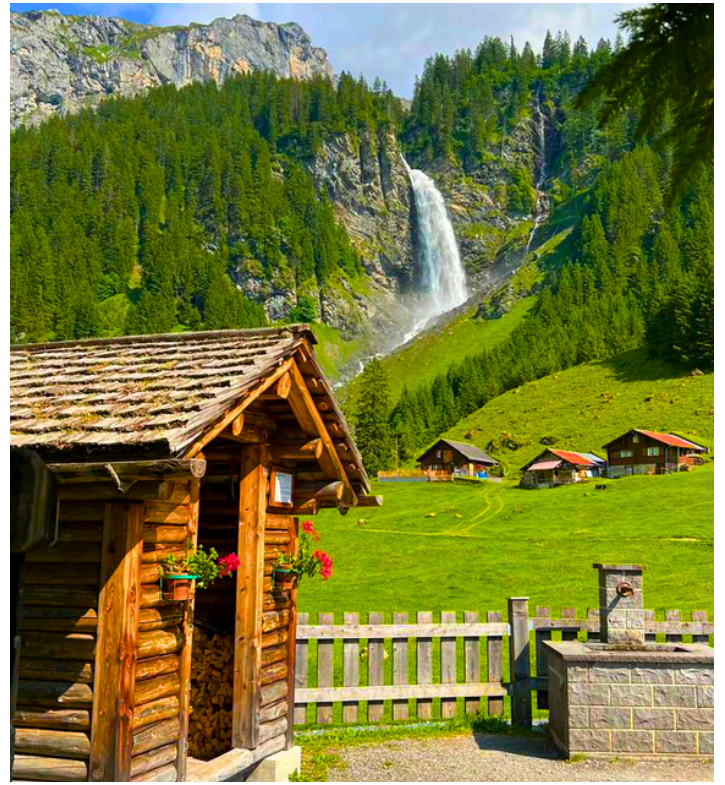
- **09:18** Train from **Lucerne (Platform 6)** → **Altdorf UR (Platform 1)**.
- **10:38** Bus **B408** → [Unterschächen, Ribi \(Stop B\)](#) (*covered by Swiss Travel Pass*).
- **11:13** Start hike following sign “**Waasserfall Stauben [55 mins]**”.

**Hike:** ~60 min, mostly flat with slight uphill (~**250 m elevation**, easy trail).

- **12:30** Reach waterfall. Restaurant **Alp Asch** nearby with outdoor seating (*open weekends June–Sept*).
- **13:30** Walk back to **Unterschächen Ribi** bus stop.

## Evening: Transfer to Interlaken

- **14:39** Bus → **Altdorf Train Station**, then train to **Lucerne**.
- **16:41** Arrive **Lucerne Main Station**.
- **17:06** Train → **Interlaken Ost**.
- **18:54** Arrive **Interlaken Ost**, check in and rest.



## Day 4: Brienz Rothorn Steam Train, Aare Gorge and Harder Kulm

**Overnight: Interlaken region**

**Operation time:**

- Brienz Rothorn Full Round: June 6<sup>th</sup> And Onward
- Aare Gorge April 12 to November 2, 2025
- Harder Kulm: April 3, 2026, to November 29

### **Morning Plan (Brienz Rothorn Steam Train)**

- **09:04** – Depart **Interlaken Ost (Platform 4)** on **PE Luzern–Interlaken Express**.
- **09:21** – Arrive **Brienz (Platform 4)**.
- The **Brienz Rothorn Steam Train station** is right next to **Brienz station**.

**Brienz Rothorn Steam Train-** Prebook month in advance from [here](#)

- Select **Brienz ↔ Rothorn**
- Turn **Return Trip ON**
- Set **Stay Duration: None**

**Recommended schedule**

- **09:40** – Steam Train **Brienz → Rothorn**
- **10:35** – Arrive **Rothorn Summit**
- Stay **~40 minutes** (recommended by system)

#### **Return train**

- **11:15** – **Rothorn → Brienz**

**Ticket price: CHF 49 with Swiss Travel Pass**

Seat reservation **included automatically.**

#### **At the summit**

- Restaurant available with **panoramic views**
- Stay **30–40 minutes** (or **1 hour if having lunch**)
- **Carry a jacket** – it's cold even in summer.

## **Afternoon Transfer to Aare Gorge**

After returning to **Brienz (~12:20 PM)**:

1. **Brienz → Meiringen** (Train **R70**, ~12 min).
2. **1-minute transfer** at Meiringen station.
3. **Meiringen → Aareschlucht West** (Train **R71**, ~2 min).
4. **Walk ~7 minutes (550 m) to Aare Gorge West Entrance.**

**Entry:** CHF 12 (buy at counter)

**Walking time inside gorge:** ~30 minutes

**Open until:** 18:30

## **Evening – Harder Kulm**

- Return to **Interlaken Ost.**
- Walk to **Harder Kulm Funicular station.**
- **Last ascent:** 20:10
- **Last descent:** 21:10
- Incline: **64%.**

#### **At the top:**

Visit **Panorama Restaurant Harder Kulm** and try the famous **Cheese Fondue with panoramic views.**



## Day 5: Jungfrau and Lauterbrunnen Village

**Overnight: Interlaken**

**Operation time:**

Jungfrau: 365 Days a year

Trummelbach falls( daily from early April through early November)

**Morning: Jungfrauoch (Top of Europe)**

Ticket Booking (Important):

Book the **scenic loop**:

- **Interlaken Ost → Grindelwald** (*regular train, free with Swiss Travel Pass*)
- **Grindelwald → Jungfrau** (*Eiger Express cable car*)
- **Jungfrau → Lauterbrunnen** (*cogwheel train*)

**How to book:**

1. Go to [Jungfrau online ticket website](#)
2. Enter **From: Interlaken Ost**
3. Select **“Plan Individual Journey Outward”**
4. Select **Return Journey → Plan Individual Journey Return**
5. Choose **Lauterbrunnen cogwheel train** for the return.

What to See at Jungfraujoch:

### **1st Floor (Entrance)**

- Ticket & info desk
- Jungfrau Railway arrival/departure station

### **2nd Floor**

- **Ice Palace** (ice tunnel with sculptures)
- **Alpine Sensation** multimedia history show
- **Souvenir shops**
- **360° Jungfrau movie**

### **3rd Floor – Main Attractions**

- **Sphinx Observatory (3571 m)** panoramic view
- **Snow Fun Park** (*seasonal*)
- **Jungfraujoch Plateau** via ice tunnel
- **Lindt Swiss Chocolate Heaven**
- **Restaurants & cafés**

### **Outside**

- **Aletsch Glacier viewpoint** (UNESCO glacier)

**Have lunch at Jungfrau restaurant**



## Stop at Kleine Scheidegg (Viewpoint)

While descending to Lauterbrunnen:

- **Stop briefly at Kleine Scheidegg**
- Walk **7–8 minutes** toward "[Restaurant Eigernordwand](#)." for views.



## Afternoon: Lauterbrunnen Village

Trümmelbach Falls

- From **Lauterbrunnen station** → **Bus 141 (15 min)**
- Explore **10 glacier waterfalls** inside the mountain
- Elevator connects viewing levels.

**Opening hours:**

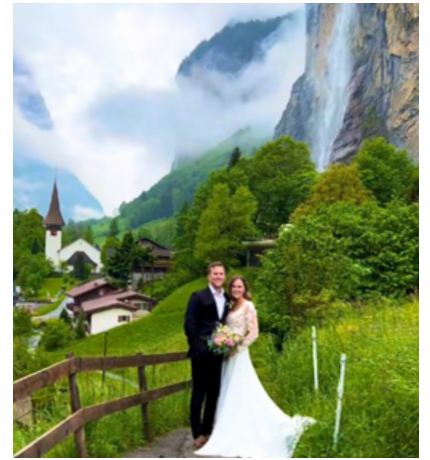
- **9:00–17:00** (Apr–Nov)

- **8:30–18:00** in Jul–Aug

Return to Lauterbrunnen station by bus.

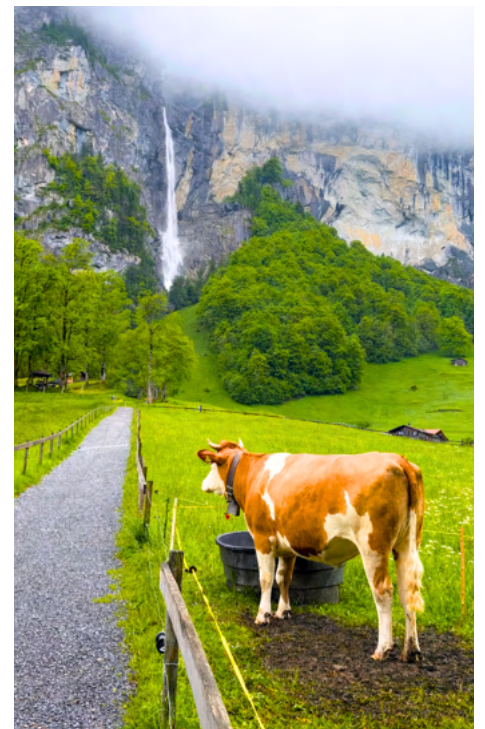
## Lauterbrunnen Waterfall

- Walk **5 minutes** from station to the **most Instagrammable village viewpoint** [Google Map](#).



- Then take a **30-minute scenic walk** to the **second waterfall and hidden viewpoint**.

[Location](#)



- Return to town by walk (or take bus from [Heliport bus stop](#) **back to Lauterbrunnen**).

Eat **Pizza at Weidstübli** at Lauterbrunnen village.

## Evening: Interlaken(Optional)

Return to **Interlaken Ost** and explore:

- **Aare River Promenade** – scenic riverside walk

- **Höhematte Park** – views of Jungfrau & paragliders
- **Höheweg Street** – shops, cafés, souvenirs
- **Yash Raj Film Statue** – Bollywood photo spot
- **Casino Interlaken** – historic building
- **Victoria Jungfrau Grand Hotel** – luxury landmark

### Dinner Options

- **Taverne** – charming Swiss restaurant
- **Brasserie 17** – Swiss cuisine
- **Des Alpes** – fondue near Yash Raj statue
- **Hüsi Bierhaus**
- **Restaurant Stadthaus** – near Interlaken West
- **Hooters** – casual snacks & beer
- **Pizzeria Horn**

## Day 6: Grindelwald First Activities & Grindelwald Village

### Overnight: Interlaken

#### Operation time:

- **Grindelwald First Gondola:** Open year-round (*Closed: 26 Oct – 27 Nov 2026*)
- **Mountain Cart & Trottibike:** **11 Apr – 25 Oct 2026**
- **First Flyer & First Glider:** Open all year
- **Pfingstegg Alpine Coaster:** **25 Apr – 25 Oct 2026**

### Morning – Grindelwald First Adventure

#### Activities at Grindelwald First

- First Flyer** – seated zipline
- First Glider** – bird-style glide
- First Mountain Cart** – 3-wheel downhill cart
- First Trottibike** – scooter-bike downhill

#### Important

- Tickets **not sold online** → arrive **before 8:30 AM** or they may sell out.

- **Check height rules for kids.**

### Adventure Package Prices

Package	CHF (Swiss Pass)	INR	Kids (6–15)
4 Activities + Unlimited Gondola	142	13,785	11,152
1 Activity + Gondola	58	5,510	4,102
2 Activities + Gondola	79	7,505	5,795
Gondola Round Trip Only	36	3,500	1,965

**Adventure package includes unlimited gondola rides to the summit (Cliff Walk point).**

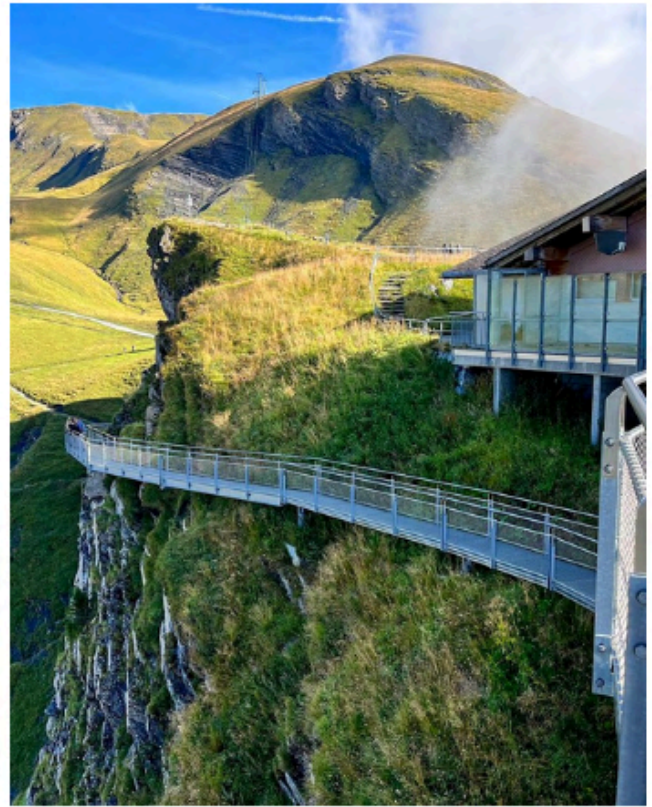
## How to Reach

- **40-min train:** Interlaken Ost → **Grindelwald**
- Walk **10 min** or take **Bus 121 / 122 / 123** to [Grindelwald First ticket office](#).

Take the **gondola to the summit**.

## At the Top

- Do the **First Cliff Walk by Tissot** (*free but requires gondola*).



**Then do adventure activities. Recommended activity order**

- a. **First Flyer** – summit → Schreckfeld (~1 min ride)
- b. **First Glider** – summit → Schreckfeld (~5 min)
- c. **Mountain Cart** – Schreckfeld → Bort (~20 min)
- d. **Trottibike** – Bort → Grindelwald base (~30 min)

During peak season, doing all 4 can take **~6 hours** due to queues.



## Afternoon – Grindelwald Town

Return via **Trottibike downhill** or **gondola**.

Explore **Grindelwald village**:

- Visit the [beautiful church](#) (5-min walk)
- Walk around town
- Eat **pizza at Onkel Tom's**

Return to **Interlaken** later.

## Optional Near Grindelwald – Toboggan

From **Grindelwald Terminal**:

- **5-min bus to toboggan station** (*closes ~6 PM*)
- Buy cable car ticket at [counter here](#) (*online not allowed*)

**Cable car: CHF 16 round trip** with Swiss Pass (*free under 6 yrs*)

Toboggan ride prices

Ride	Price
1 Ride	CHF 8
6 Rides	CHF 43
10 Rides	CHF 72

Children:

- **8-15:** CHF 6
- **4-7:** CHF 2 (*with adult*)



**What If Only want to Do Cliff Walk (No Adventure Activities)**

## Alternative Itinerary: After Grindelwald Cliff Walk-> Visit village of Mürren, Allmendhubel & Gimmelwald

### Operation time:

- **Lauterbrunnen–Grütschalp Gondola / Grütschalp–Mürren Train:** Closed **13 Apr–10 Jul 2026** and **26 Oct–6 Nov 2026**  
→ Use **Stechelberg–Gimmelwald–Mürren cable car** instead.
- **Mürren–Allmendhubel Funicular:** Closed **7 Apr–22 May 2026** and **19 Oct–11 Dec 2026**

### After Grindelwald Cliff Walk:

- Train **Grindelwald → Lauterbrunnen** (*39 min*)
- Cable car **Lauterbrunnen → Grütschalp**
- Train **Grütschalp → Mürren** (*free with Swiss Pass*)

### From Mürren:

- Walk **10 min** to [Allmendhubel funicular](#)
- **CHF 8** round trip, last ride **5 PM**

At **Allmendhubel summit**:

- Playground
- Flower Trails
- Amazing mountain views



Return to **Mürren village** and explore (~20-min walk across village).

## Walk to Gimmelwald

Optional **30-min downhill walk** from **Mürren** → **Gimmelwald**. *If you want to skip this, then take Gondola back from Murren to Stechelberg (Free With Swiss Travel Pass)*

Visit the [famous hostel which also has Bar](#) with **outdoor seating and views**.



From **Gimmelwald**:

- Cable car → **Stechelberg**
- **Bus 141** → **Lauterbrunnen**

- Train → **Interlaken.**

## Day 7: Gelmerbahn Funicular, Rosenloui Valley and Lake Brienz Cruise

**Overnight: Interlaken region**

**Operation time:**

Gelmerbahn: 6 June – 25 October 2026

[Rosenloui Valley Bus](#): High frequency= 30 May- October 11<sup>th</sup> and Very low frequent between 14 May to 29 May and 12 October till 18 October)

**Please prebook the Gelmerbahn in advance from [here](#)** as ticket for the day are sold out weeks in advance- especially at the peak season[Adult: 40 CHF, Kids 6-15: 20 CHF, Note: No any discount with Swiss Travel Pass]

### **Gelmerbahn**

-8.33 : Start from Interlaken Ost and arrive at Meiringen. Check [time table here](#)

-09.25: From Meiringen- Take the bus B161 to Handegg, Gelmerbahn

-09.58: Arrive at Handegg Gelmerbahn Bus stop

-Walk 10 Minutes to the boarding point from the bus stop- its flat walk

-11.00 Board the Gelmerbahn . Its 12 mins ride!

-11.10 Arrive at the top by Gelmerbahn ride. Note at the top- there is nothing great to see except the alpine lake and its not even 5 mins walk. So purchase the Descent ticket for 11.36

-11.36 Descent Gelmerbahn

-11.48 Arrive at base. It will probably take 10-15 minutes to reach back to the bus stop.

-12.33 Take Bus back to Meiringen. [Time table.](#)



-13.13 Arrive at Meiringen

-Have Lunch at Meiringen. Also grab some food from Coop store next to the bus stop to enjoy picnic at Rosenloui Valley.

### **Rosenloui Valley**

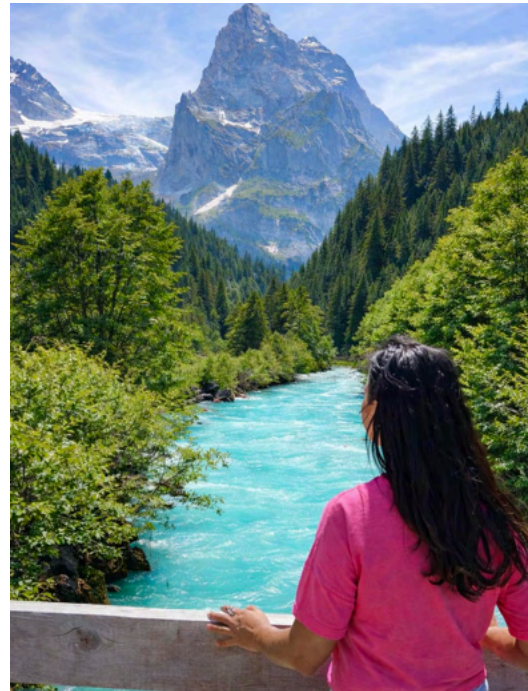
-14.20 From Meiringen-> Take the B164 Bus to Rosenloui Valley. [Time Table](#)

-14.47 Deboard the bus at [Gschwandenmaad bridge](#)

-The river stream is just next to the bridge. You can enjoy picnic here. There is also [gorge near by](#) . But, Aare Gorge is much better - so if you have done Aare Gorge- You wont like this probably(so skip).

-16.22 Take the [bus B164](#) Back to Meiringen

-16.54 Arrive at the Meiringen



### Lake Brienz Cruise

-17.22: Take train from Meiringen for Lake Brienz Station

-17.33: Arrive at Lake Brienz

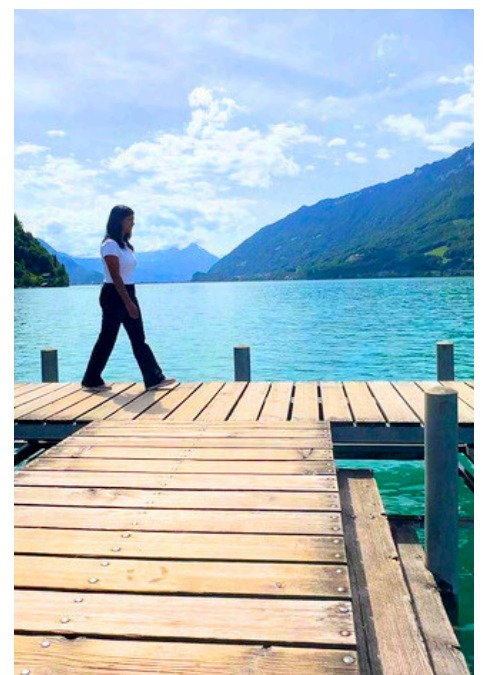
-17.40: Take the Lake Brienz Cruise and Sail from Brienz to Iseltwald(The village famous for “Crash Landing on You”- Korean series). Note: The Cruise Connects the train arrival and you don't need to reserve. Its fully covered by the Swiss Travel Pass. So, just disembark the train and join the Cruise Queue next to the Train Station.

-18.16: Arrive at the village of Iseltwald by Cruise

-Explore [the pier](#)

-The village is tiny, walkable but very spectacular.

-19.29 Catch bus back to Interlaken Ost



# Day 8: Oeschinensee Lake, Blausee Lake and Lake Thun

## Cruise

**Overnight: Interlaken region**

**Operation time:**

If you're seeking an unforgettable experience in Switzerland, **Oeschinensee** is a perfect destination—one of the most beautiful lakes in the country.

### Oeschinensee Lake

- **09:29** Depart **Interlaken Ost** for **Spiez**
- From **Spiez**, take **RE1 (Direction: Iselle di Trasquera)** to **Kandersteg Train Station**  
**Note:** Often two trains are attached at Spiez and later split, with each half going a different route. Confirm with a co-passenger that your compartment is going to **Kandersteg**
- **10:40** Arrive at [Kandersteg Train Station](#)
- From Kandersteg, take **Bus B242** to [Oeschinensee cable car station](#) or walk **15 minutes**
- **10:50** Arrive at the **cable car station**

#### Booking cable car

Although the website advises booking in advance, I didn't face long queues even in peak summer, so I suggest buying tickets at the **Automated Ticket Machine**.

- **Round trip:** 40 CHF
- **With Swiss Travel Pass:** 20 CHF
- **Children 6–15:** Free

After buying the ticket, parents should go to the **Gondola "Fast Lane"** (not the ticket booth) and show the vending machine ticket plus the **Junior Card (Swiss Travel Pass)** to get the child's ticket.

- **11:15** Take the cable car to the top
- The lake is **not directly at the gondola top**; it's about a **30-minute flat walk** to the lakeshore

#### Route to the lake

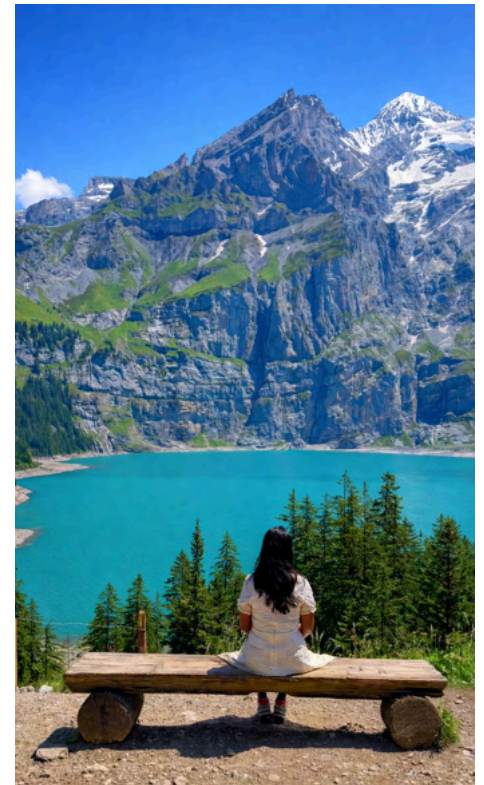
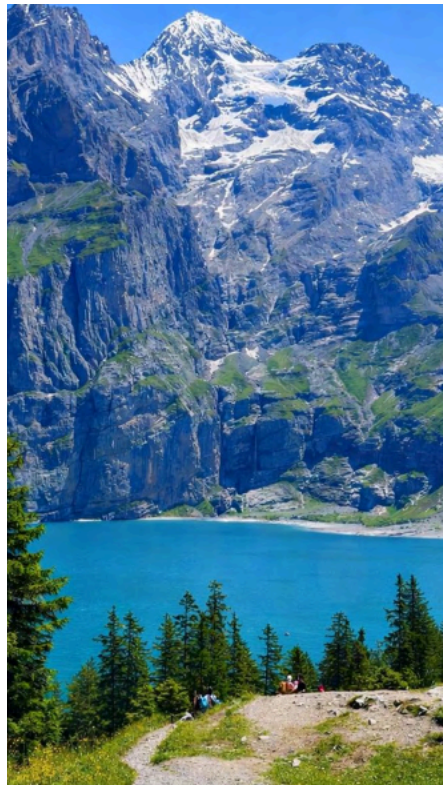
### If you have a stroller:

Take the route marked “**Oeschinensee 15 MIN**” and at the **Y junction follow the right-side road**. Most people take this easy **gravel service road** directly to the water.

### If you don't have a stroller:

Take the **left-side road** at the **Y junction** toward “**Restaurant Zur Sennhütte**” ([Google Map](#)). This route is slightly longer but very scenic. The view from the restaurant bench is beautiful. After the restaurant, take the **downhill shortcut** to the lakeshore.

Below is the view from the restaurant.



- **12:15** Arrive at the **lake shore**  
Swimming is allowed at **Oeschinensee**, but the water is always very cold, even in summer. There are **no changing rooms** and **no lifeguard on duty**
- **14:00** Take the trail back toward the **cable car top**. You can use a different trail this time
- Near the top gondola station, there is also a **mountain roller coaster**. The queue is usually short, so you can do it quickly before taking the gondola down
- **14:30** Take the **gondola/cable car** back to the base station

## Lake Blausee

- From the base station, take **Bus B230** to **Lake Blausee BE**  
If the bus wait is long, you can walk **19 minutes** to **Kandersteg Train Station**
- There are **many food and restaurant options** near **Kandersteg Train Station**
- **16:00** Arrive at the [Lake Blausee Ticket office](#) (**1-minute walk** from the bus stop)
  - Ticket: around **12 CHF**

- Children **6+**: around **5–9 CHF**
- Children **under 6**: free
- **Boat trip and alpacas are included** in the ticket
- From the ticket office, it's **less than 5 minutes' walk** to the lake
- As soon as you arrive, do the **boat ride first** since it is complimentary with every ticket and **closes after 5 PM**
- Then explore the lake; the **loop trail around the shore takes 15–20 minutes**
- **17:08 or 18:08** Take the **bus + train** back to **Spiez**



### Optional: Lake Thun by 18:34 Sunset Ferry

- From **June 13 to October 11**, the **Sunset Lake Thun Cruise** runs daily from **Spiez to Thun**
- If you are traveling during this period:
  - After getting off at **Spiez Train Station**, walk **downhill 10–15 minutes** to [Spiez Schiffstation Ferry Terminal](#)
  - **18:34** Board the **Lake Thun ferry**
  - **19:20** Arrive at **Thun** and spend some time around the lake



Back to Interlaken Ost

- **19:50** Walk **5 minutes** to **Thun train station** and take the direct train to **Interlaken Ost**

## Day 9: Travel to Zurich, Explore Lind Chocolate Museum and the Rhine Waterfall

**Overnight: Zurich**

**Operation time:**

Lind Chocolate: Opens year round

Rhine Falls: viewpoints open year round, boats late March to mid October

**Lind Home of Chocolate Ticket need to be [prebooked](#) in advance. Cost 17 CHF. To optimize your schedule, aim to book the 1 PM slot if you adhere to the itinerary below. You may arrive up to 29 minutes late per the rule.**

-Check out from Interlaken and Take 2.5 Hrs train to Zurich HB

-Upon arrival at Zurich HB, store the Luggage at the locker.

-From Zurich Station: Train number S8 (direction Pfäffikon SZ) to Kilchberg and in 20 minutes arrive to Kilchberg

-Arrive at [Lindt Home of Chocolate](#)



- After spending a couple of hours at the Lindt Chocolate Museum, it's time to make our way to the Rhine Falls.
- To reach the Rhine Falls, take the **train to the station “Schloss Laufen am Rheinflall.”** There are some connection from Kilchberg(Lind Chocolate Station) that is more convenient(Just 1 change involved).. See below:
- Here you can either see Rhine Fall from the observation desk(few mins walk from Train stop) and it cost 5 CHF ticket- buy at booth or you can see Rhine Falls from the [15 Minute Round Trip boat ride \(Prebook online\)](#) . **The Last boat tour departs at 18.24**



-Back to Zurich after long day.

## Day 10: Exploring Zurich by day and boarding an evening flight back home.

To explore Zurich, you can follow this 27 minutes walking map: [Map Link](#)

- A. Start from BurkPl. A ferry terminal
- B. Head toward Fraumünster - main church in Zürich
- C. Grossmünster -Protestant Church- one of the most recognizable landmarks in the city
- D. Old Town Street: Starting Point
- E. Niederdorf: The celebrated Old Town district of the Niederdorf is affectionately known by locals as the Dörfli – the “little village”.
- F. Lindenhof Hill : For a beautiful view over Zürich, walk to the top of Lindenhof hill. Find a spot along the sitting wall and enjoy the view.